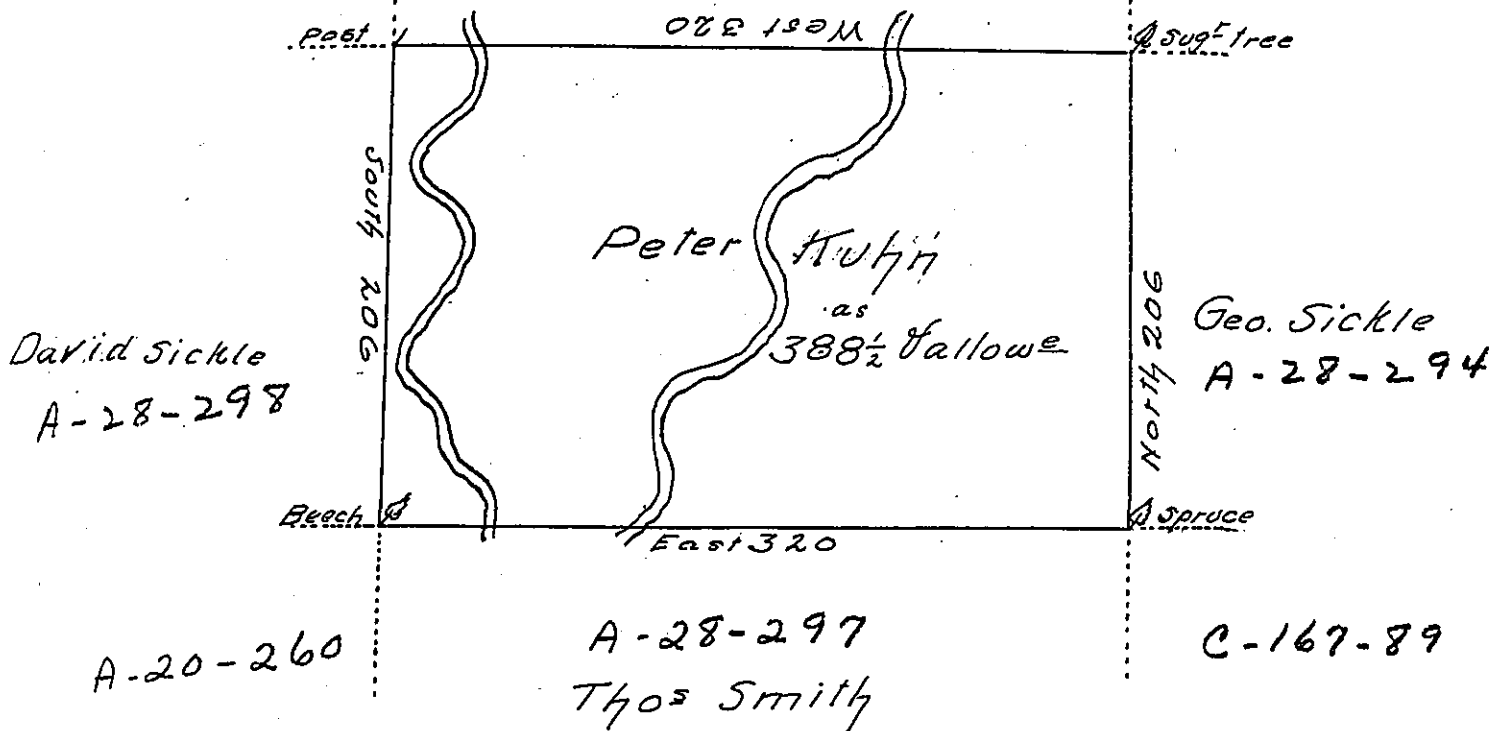


Gadwallader Morris

A-40-282

C-141-236

A-28-295



Draught of a tract of Land Called — Situate on the Waters of
 Wyolusing Creek joining land sur^d for Gadw^d Morris and others
 in Luzerne (formerly North^d) County Containing three hundred
 and Eighty eight $\frac{1}{2}$ - $\frac{1}{2}$ fallow^e of Six p cent for roads &c. sur^d for
 Peter Kuhn the 30th day of August 1787 in pursuance of a Warrant
 dated the 27th day of July 1787 by

W^m Gray D.S

To John Lukens Esq^r

Sur^v Gen^l

IN TESTIMONY that the above is a copy of the original remaining on file in
 the Department of Internal Affairs of Pennsylvania, made
 conformably to an Act of Assembly approved the 16th day of
 February, 1833, I have hereunto set my Hand and caused
 the Seal of said Department to be affixed at Harrisburg,
 this twenty ninth day of July 1905

Loach P. Brown
 Secretary of Internal Affairs.